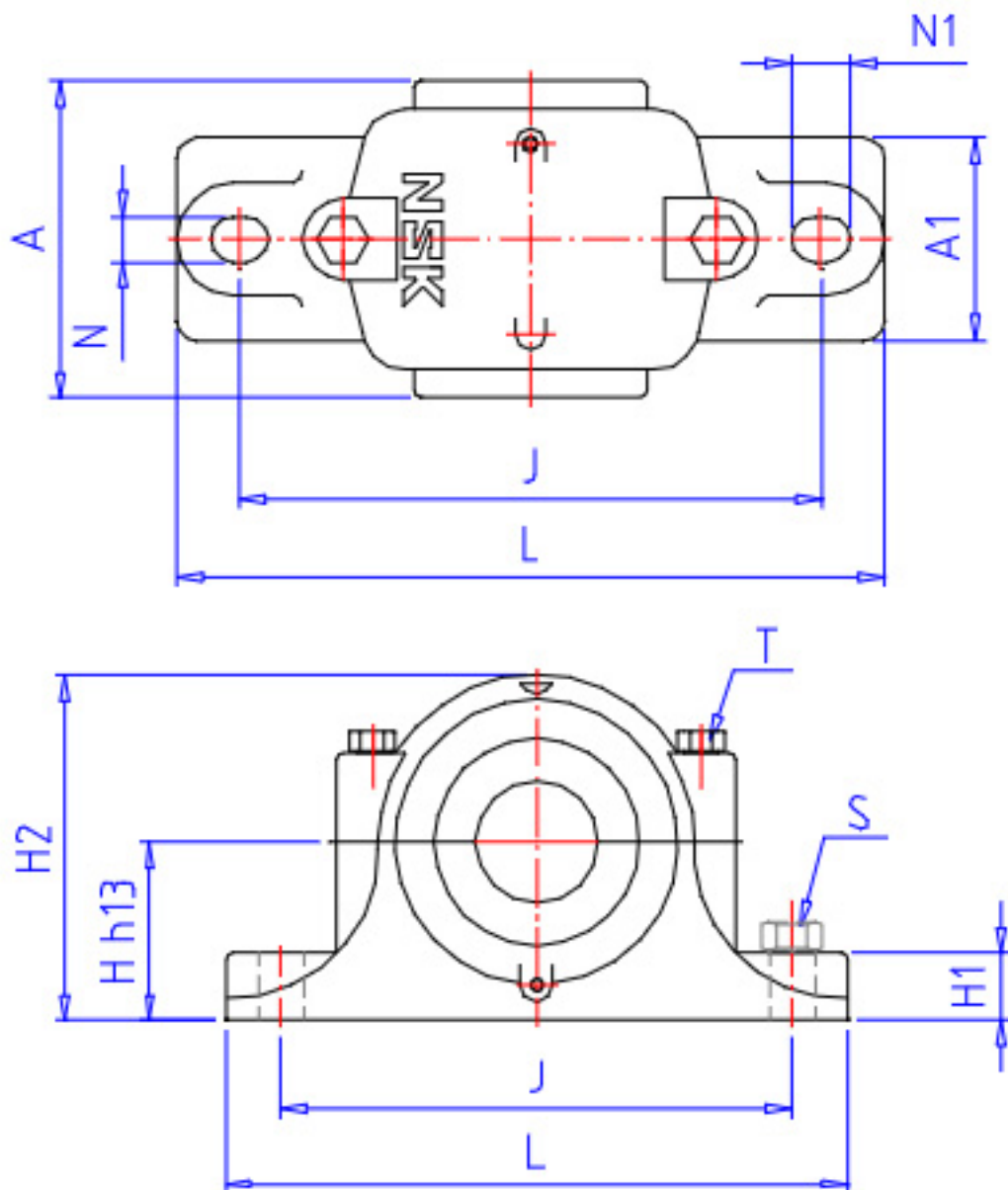


NSK 54216U参数

| | | | | |
|--------|------|--------|-------|------|
| 型号 | 型号 | 54216U | | - |
| 外形尺寸 | SD2 | 65 | mm | 内径 |
| | SD | 80 | mm | 外径 |
| | D | 115 | mm | 宽度 |
| | T1 | 48 | mm | - |
| | T5 | 51.0 | mm | - |
| | T7 | 58 | mm | - |
| | SR | 1.0 | mm | (最小) |
| | SR1 | 1.0 | mm | (最小) |
| 基本额定载荷 | CAN | 79000 | N | 动载荷 |
| | COAN | 218000 | N | 静载荷 |
| | CA | 8050 | kgf | 动载荷 |
| | COA | 22300 | kgf | 静载荷 |
| 极限转速 | GRE | 1700 | 1/min | 脂润滑 |
| | OIL | 2600 | 1/min | 油润滑 |
| 尺寸 | SD3 | 115.0 | mm | - |
| | D1 | 82 | mm | - |
| | D2 | 98 | mm | - |
| | D3 | 120 | mm | - |
| | T2 | 29.0 | mm | - |
| | T6 | 30.5 | mm | - |
| | T8 | 34.0 | mm | - |
| | B | 10 | mm | - |
| | SB | 10.0 | mm | - |
| | A1 | 45.0 | mm | - |
| | R | 90 | mm | - |
| 安装尺寸 | DA | 98 | mm | (最大) |
| | SRA | 1.0 | mm | (最大) |
| | SRB | 1.0 | mm | (最大) |
| 重量 | MASS | 2210 | g | 重量 |

NSK 54216U图片



参考资料:<http://www.sozhou.com/p/c9ae6ae6.html>

