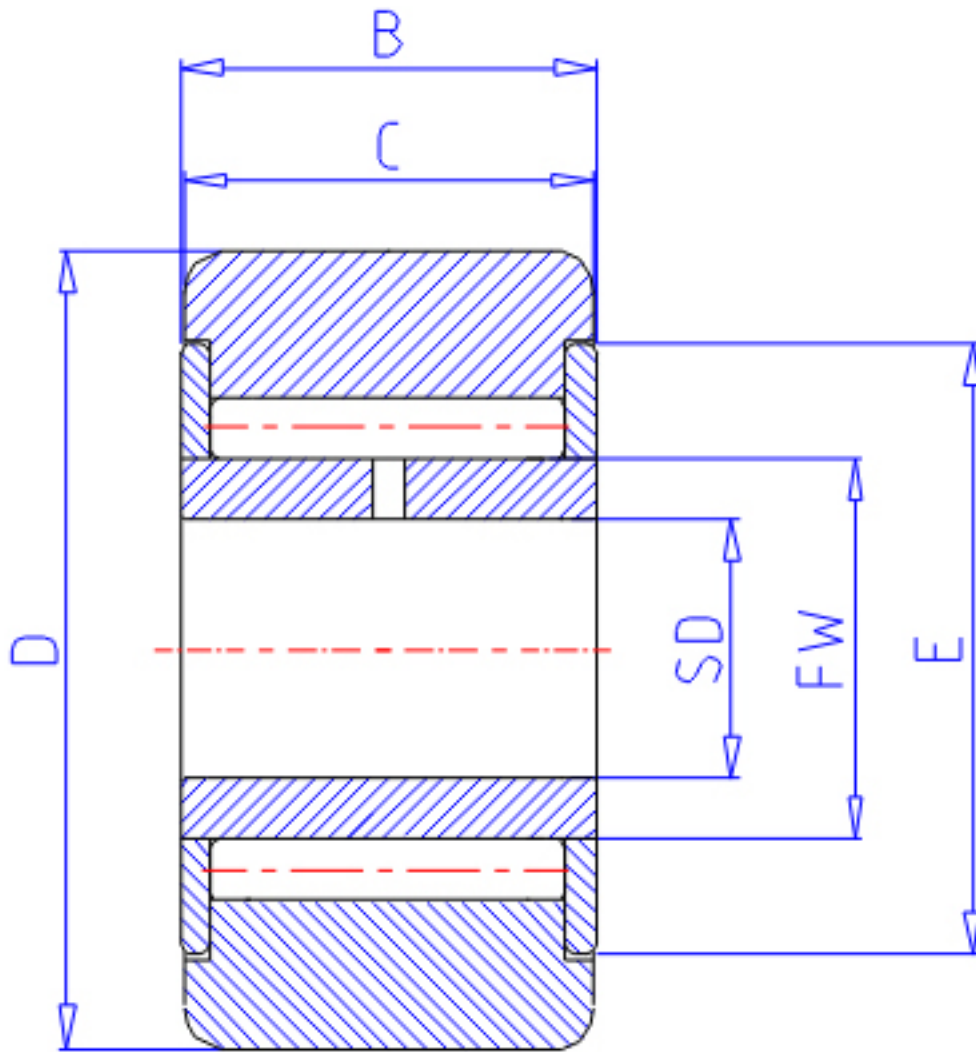


NTN NATV25LL/3AS参数

| | | | | |
|-------|--------|--------------|-------|-----|
| 型号 | ORDER | NATV25LL/3AS | | 型号 |
| 尺寸 | D | 52 | mm | 外径 |
| | SD | 25 | mm | - |
| | B | 25 | mm | 宽度 |
| | C | 24 | mm | 宽度 |
| | E | 42 | mm | - |
| | FW | 30.0 | mm | - |
| | 基本额定载荷 | CR | 31500 | N |
| COR | | 73500 | N | 静载荷 |
| CRF | | 3200 | kgf | 动载荷 |
| CORF | | 7500 | kgf | 静载荷 |
| CR2 | | 5500 | N | 动载荷 |
| COR2 | | 23300 | N | 静载荷 |
| CRF2 | | 565 | kgf | 动载荷 |
| CORF2 | | 2370 | kgf | 静载荷 |
| 极限转速 | LSG | 3300 | r/min | 脂润滑 |
| | LSO | 4500 | r/min | 油润滑 |
| 重量 | MASS | 285 | g | 重量 |
| 尺寸 | DS | 52 | mm | - |

NTN NATV25LL/3AS图片



参考资料:<http://www.sozhou.com/p/f42668d2.html>

